

Hazardous and Special Products: Processor Performance Reporting Guide

Refillable propane containers



Table of Contents

Introduction

- What is HSP performance reporting?
- What data needs to be reported?
- How to log into the Registry
- How to manage contacts on your Registry account

How to submit your processor performance report

- Step-by step instructions on how to complete the report

Additional Resources

- More resources to help further answer your questions

Introduction



What is Hazardous and Special Products performance reporting?

HSP performance is an annual report that processors with obligations under the [Hazardous and Special Products \(HSP\) Regulation](#) complete to report on their processing activities from October 1, 2021 to December 31, 2022. **The deadline to submit performance reports is September 15.**

This guide will assist processors with understanding what data they need to report and provide step-by-step instructions on how to complete the report in RPRA's Registry.

Further information about the HSP Regulation can be found on RPRA's [website](#).

If you have further questions that are not answered in this guide, please contact the Compliance Team at registry@rpra.ca or call 1-833-600-0530.

What data needs to be reported?

Processors of **refillable propane containers** are required to report the following information from October 1, 2021 to December 31, 2022:

- The weight of material received from an HSP hauler and their name, contact information and RPRA registration number.
- The weight of material received from a person other than an HSP hauler and their name and contact information and RPRA registration number.
- The weight of recovered resources.
- A list of the types of resources recovered.
- The weight of materials processed from that type of HSP that were:
 - Land disposed,
 - Incinerated,
 - Used as a fuel or a fuel supplement, or
 - Stored, stockpiled, used as daily landfill cover or otherwise deposited on land.

What data needs to be reported? cont.

Processors of **refillable propane containers** are required to report the following information from October 1, 2021 to December 31, 2022:

- The weight of material that was sent by the processor to another person for the purpose of making recovered resources and the types of products made by that other person.
- The weight of any materials received from outside of Ontario.
- The name, contact information and RPRA registration number of the PRO(s), if the processor belongs to a PRO(s) management system.

How to log into the Registry as an account admin

The report is completed online through RPRA's Registry.

You can access your Registry account here: registry.rpra.ca

Tips for logging into the Registry for the first time:

- If you don't have an account, click "Don't have an Account? Create a new Account".
- The Registry **will not work** with the Internet Explorer web browser. Google Chrome is the recommended web browser to use.

Tips for logging into an existing Registry account:

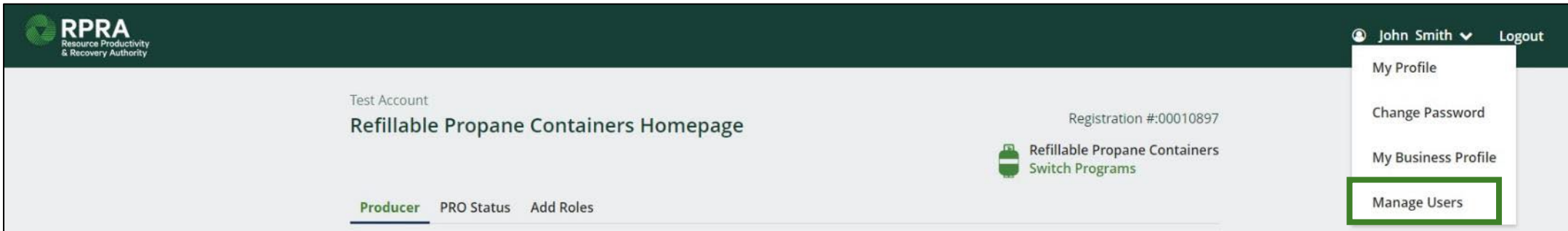
- If you already have an existing Registry account, you do not need to create a new one.
 - Simply log into your existing account, which will bring you to the homepage where you will see all programs you are enrolled in.
 - If you have forgotten your password, click "Forgot Password" on the login screen and follow the instructions provided.
- Watch [this how-to video](#) if you would like to watch step-by-step instructions.

How to manage contacts in your Registry account

Account admins must add any new or manage existing primary contacts under the program they wish to give them access to (e.g., permissions to view and complete reports). Read this [FAQ](#) for more information on user levels in the Registry.

To manage contacts in your Registry account, see the following steps or watch our [how-to video](#):

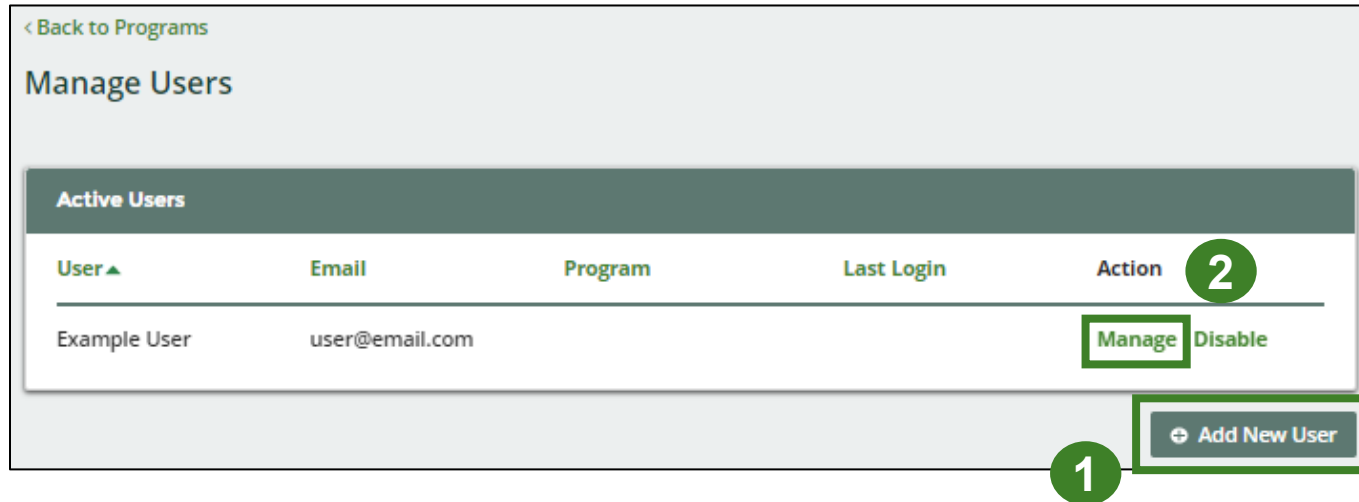
1. Once you are logged into your account, click on the drop-down arrow in the top right corner and select **Manage Users** as shown below.



The screenshot displays the RPRC (Resource Productivity & Recovery Authority) dashboard. The top navigation bar includes the RPRC logo and the user's name 'John Smith' with a dropdown arrow and a 'Logout' link. The main content area shows 'Test Account', 'Refillable Propane Containers Homepage', and 'Registration #:00010897'. Below this, there are links for 'Producer', 'PRO Status', and 'Add Roles'. On the right side, a dropdown menu is open, listing 'My Profile', 'Change Password', 'My Business Profile', and 'Manage Users'. The 'Manage Users' option is highlighted with a green rectangular box. A green circle with the number '1' is positioned to the right of the dropdown menu.

How to manage contacts on your Registry account cont.

1. Click **Add New User** to add an additional user to your account.
2. Under Action, click **Manage** to update preferences of existing users.



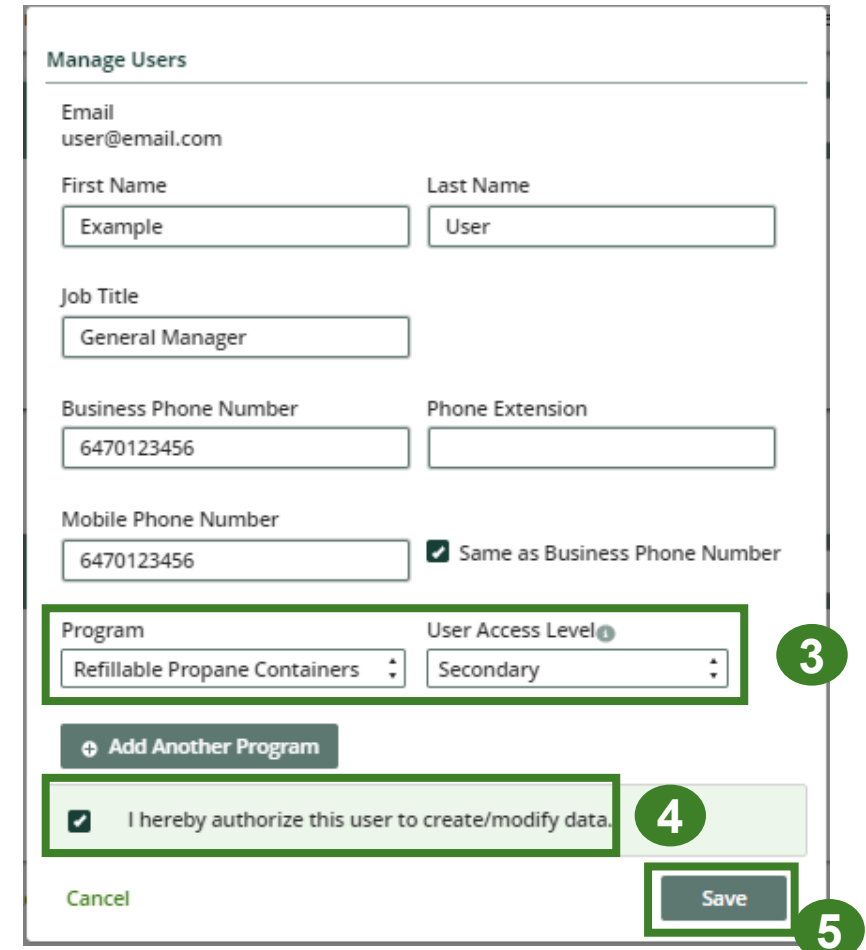
< Back to Programs

Manage Users

Active Users

User ▲	Email	Program	Last Login	Action 2
Example User	user@email.com			Manage Disable

1 [+ Add New User](#)



Manage Users

Email
user@email.com

First Name Last Name

Job Title

Business Phone Number Phone Extension

Mobile Phone Number Same as Business Phone Number

Program User Access Level 3

[+ Add Another Program](#)

I hereby authorize this user to create/modify data. 4

Cancel [Save](#) 5

3. To give reporting abilities to a **Primary** or **Secondary** contact, select the program from the drop-down that you would like to grant the user access to.
4. Check the box to authorize the user.
5. Click **Save**.

How to submit your processor performance report

The next few slides will guide you with entering your **received from haulers** material(s) data.



Performance report

Access your program

1. After logging in, click on the icon for the **Refillable Propane Containers** program on your dashboard

HSPTesting











Programs

▼ Programs You Are Registered In

▼ Digital Reporting Services

You are not registered in any programs from this section.

▼ Producer Responsibility Programs

				
Automotive Materials	Batteries	Fertilizers	ITT/AV	Mercury-Containing Devices
				
Paints, Coatings and Solvents	Pesticides	Pressurized Containers (Excluding Refillable Propane Containers)	Refillable Propane Containers	

Performance report

Start your report

1. On the **Refillable Propane Containers** homepage, click on the **Processor** tab to navigate to the processor reports.
2. Under **Action**, click on **Start** to begin completing the Refillable Propane Containers report.
3. After clicking **Start**, a notice will appear. After reading the notice, click **Proceed**.

Note: Only the roles you are enrolled in will be clickable (e.g., if you are only a processor, you cannot click into the other role tabs.).

HSP Testing Guide
Refillable Propane Containers Homepage
Registration #:00025567
Refillable Propane Containers Switch Programs

An asterisk (*) indicates that you have incomplete items to address in the tab. **1**

Producer Hauler **Processor *** Invoices Add Roles

Report	Status	Last Updated By	Action
2021/22 Refillable Propane Containers Pe...	Not Started Due Date: Jul 31, 2023		Start 2

Processing Sites **Manage**
List the address of each site where refillable propane containers are processed.

Materials Processed from Refillable Propane Containers **Manage**
Identify the materials that you recover or process.

Attention

It is an offence if you submit false or misleading information to the Authority.

Cancel **3** **Proceed**

Performance report

Report summary page

Before entering any information, your report status will be listed as **Not Started**, and the **Submit Report** button will be disabled until all sections of the report are completed. If some sections of the report are not applicable, enter **0**.

1. Under **Received from Haulers** in the **Inside Ontario** tab, click **Start** to begin entering the total weight of pressurized containers received from haulers.

HSPTesting
2021/22 Refillable Propane Containers Performance - Processor

Report Summary

Received from Haulers

Inside Ontario Outside Ontario

Input the weight of refillable propane containers received from inside Ontario.

Inside Ontario	Total Kilograms
Refillable Propane Containers	
Total	

Start

Report Status
Not Started

Submit Report

Make sure to provide all the required data before submitting.

1

Performance report

Add haulers you received materials from

Add each hauler that you received **refillable propane containers** from to your report.

1. Use the **search bar** to look up the name of your hauler(s).
2. Once your hauler name appears in the list, click **Add**.
3. Hauler(s) added will appear in the **Step 2: Enter data for all your haulers** section.

HSPTesting
2021/22 Refillable Propane Containers Performance - Processor
Follow the steps below to identify and enter data for all the haulers you received refillable propane containers from. Click **Continue** once you have finished entering data for all of your haulers.

Received from Haulers

Enter your haulers' registration number (#), name or address in the search bar to see the search results in the table below.

Step 1: Search for and add all your haulers

haul

Registration #	Company Name	Primary Contact	Address	Action
00025443	HaulerTesting	Hauler Testing	100 Fake St, Ottawa	Add

Haulers you have added in Step 1 above will appear in the table below.

Step 2: Enter data for all your haulers

Registration #	Company Name	Inside Ontario	Outside Ontario	Action
00025443	HaulerTesting	0	0	Enter Remove

Continue only when you have finished entering data for all of your haulers

Performance report

Enter weight of materials received from each hauler

1. Under **Action**, click **Enter** to add the total weight of refillable propane containers received from each hauler.

Haulers you have added in Step 1 above will appear in the table below.

Step 2: Enter data for all your haulers

Registration #	Company Name	Inside Ontario	Outside Ontario	Action
00025443	HaulerTesting	0	0	<input type="button" value="Enter"/> <input type="button" value="Remove"/> 1

Continue only when you have finished entering data for all of your haulers

Performance report

Enter weight of materials received from each hauler cont.

1. Under the **Inside Ontario** tab, enter the **Total Kilograms** of refillable propane containers collected from inside Ontario received from that hauler.
2. Click **Save & Next**.

HSPTesting
2021/22 Refillable Propane Containers Performance - Processor
Enter your data and click **Save & Next** to move to the next reporting screen.

Received from Haulers

Inside Ontario Outside Ontario

Input the weight of refillable propane containers received from inside Ontario.

Inside Ontario	Total Kilograms
Refillable Propane Containers	<input type="text" value="0"/>

Clear Form **Save & Next**

Performance report

Enter weight of materials received from each hauler cont.

1. Under the **Outside Ontario** tab, enter the **Total Kilograms** of refillable propane containers collected from outside Ontario received from that hauler.
2. Click **Save & Next**.

HSPTesting
2021/22 Refillable Propane Containers Performance - Processor
Enter your data and click **Save & Next** to move to the next reporting screen.

Received from Haulers

✓ Inside Ontario **Outside Ontario**

Input the weight of refillable propane containers received from outside Ontario.

Outside Ontario	Total Kilograms
Refillable Propane Containers	<input type="text" value="0"/>

Clear Form Previous **Save & Next**

1

2

Performance report

Enter weight of materials received from each hauler cont.

1. Click on **Update** if you need to make a change to data entered for all your haulers.
2. Click on **Continue** to proceed.

HSPTesting

2021/22 Refillable Propane Containers Performance - Processor

Follow the steps below to identify and enter data for all the haulers you received refillable propane containers from. Click **Continue** once you have finished entering data for all of your haulers.

Received from Haulers

Enter your haulers' registration number (#), name or address in the search bar to see the search results in the table below.

Step 1: Search for and add all your haulers

Enter search terms here

Registration #	Company Name	Primary Contact	Address	Action
No Results				

Haulers you have added in Step 1 above will appear in the table below.

Step 2: Enter data for all your haulers

Registration #	Company Name	Inside Ontario	Outside Ontario	Action
00025443	HaulerTesting	1,000	1,000	Update Remove 1

Continue only when you have finished entering data for all of your haulers **Continue >** **2**

Performance report

Report summary

On the report summary you will see the total sum of kilograms dropped off by all haulers.

1. Click on **Edit** if you need to make a change to the refillable propane containers weight.

HSPTesting
2021/22 Refillable Propane Containers Performance - Processor

Report Summary

Received from Haulers

Inside Ontario Outside Ontario

Input the weight of refillable propane containers received from inside Ontario.

Inside Ontario	Total Kilograms
Refillable Propane Containers	1,000
Total	1,000

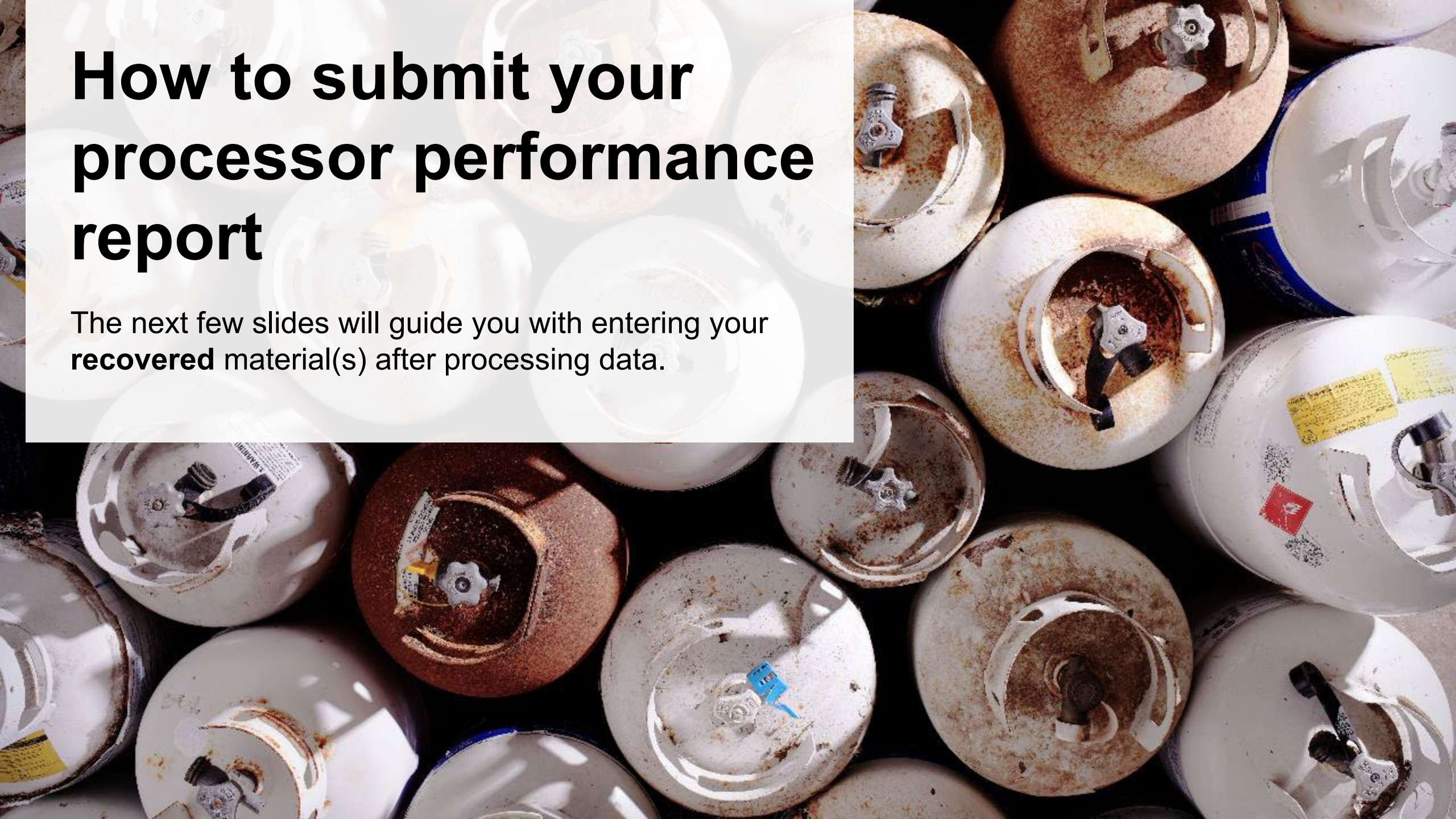
Inside Ontario data last updated by: HSP Testing on May 05, 2023 11:46 a.m.

[Edit](#)

1

How to submit your processor performance report

The next few slides will guide you with entering your **recovered** material(s) after processing data.



Performance report

Enter your data for the weight of recovered materials

1. Click **Start** to begin entering the total weight of recovered materials.

Recovered Materials

Refillable Propane

Input the weight of materials recovered from processing the collected refillable propane containers.

Refillable Propane	Total Kilograms
Metal	
Recovered Propane	
Refurbished Containers	
Other	
Total	

Start **1**

Performance report

Entering weight of recovered materials

1. Under the **Refillable Propane** tab, enter the total weight of materials recovered for each of the recovered material(s) under **Total Kilograms**.

- If applicable list any materials included in the **Other** category.

2. Click **Save & Next** to proceed.

3. Click on **Edit** if you need to change the previously entered data.

HSPTesting
2021/22 Refillable Propane Containers Performance - Processor
Enter your data and click **Save & Next** to move to the next reporting screen.

Recovered Materials

Refillable Propane

Input the weight of materials recovered from processing the collected refillable propane containers.

Refillable Propane	Total Kilograms
Metal	<input type="text" value="0"/>
Recovered Propane	<input type="text" value="0"/>
Refurbished Containers	<input type="text" value="0"/>
Other	<input type="text" value="0"/>

List any materials included in the "Other" category (250 characters max.)

[Clear Form](#) [Save & Next](#)

Recovered Materials

Refillable Propane

Input the weight of materials recovered from processing the collected refillable propane containers.

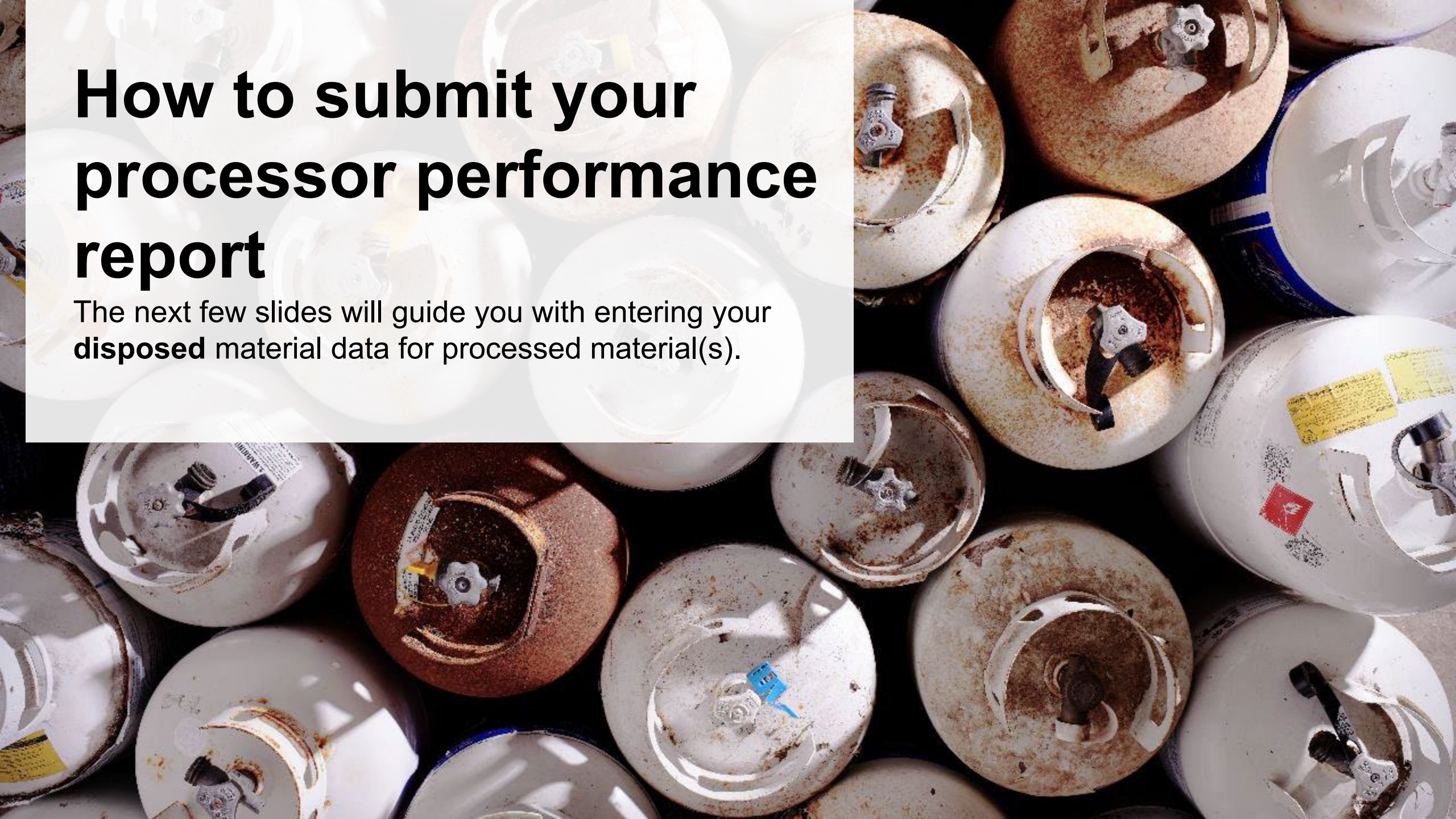
Refillable Propane	Total Kilograms
Metal	1,000
Recovered Propane	1,000
Refurbished Containers	1,000
Other	0
Total	3,000

Refillable Propane data last updated by: HSP Testing on May 05, 2023 11:59 a.m.

[Edit](#)

How to submit your processor performance report

The next few slides will guide you with entering your **disposed** material data for processed material(s).



Performance report

Enter your processed material disposal data

1. Click **Start** to enter the weight of the material(s) disposed, which includes materials sent to landfills and dumps.

Processed Material Disposal Data

Land Disposed Incinerated Used as Fuel Stockpiled

Includes material sent to landfills and dumps.

Land Disposed	Total Kilograms
Metal	
Recovered Propane	
Refurbished Containers	
Other	
Total	

1 **Start**

Performance report

Enter your processed material disposal data cont.

1. In each category (**Land Disposed**, **Incinerated**, **Used as Fuel**, **Stockpiled**), enter the total weight of processed materials for each of the material(s) under **Total Kilograms**.
 - If applicable, list any materials included in the **Other** category.

HSPTesting
2021/22 Refillable Propane Containers Performance - Processor
Enter your data and click **Save & Next** to move to the next reporting screen.

Processed Material Disposal Data

Land Disposed Incinerated Used as Fuel Stockpiled

Includes material sent to landfills and dumps.

Land Disposed	Total Kilograms
Metal	<input type="text" value="0"/>
Recovered Propane	<input type="text" value="0"/>
Refurbished Containers	<input type="text" value="0"/>
Other	<input type="text" value="0"/>

List any materials included in the "Other" category (250 characters max.)

I did not send any material for land disposal.

Clear Form **Save & Next**

HSPTesting
2021/22 Refillable Propane Containers Performance - Processor
Enter your data and click **Save & Next** to move to the next reporting screen.

Processed Material Disposal Data

✓ Land Disposed **Incinerated** Used as Fuel Stockpiled

Excludes material used as fuel or a fuel supplement.

Incinerated	Total Kilograms
Metal	<input type="text" value="0"/>
Recovered Propane	<input type="text" value="0"/>
Refurbished Containers	<input type="text" value="0"/>
Other	<input type="text" value="0"/>

List any materials included in the "Other" category (250 characters max.)

I did not send any material for incineration.

Clear Form Previous **Save & Next**

HSPTesting
2021/22 Refillable Propane Containers Performance - Processor
Enter your data and click **Save & Next** to move to the next reporting screen.

Processed Material Disposal Data

✓ Land Disposed ✓ Incinerated **Used as Fuel** Stockpiled

Material used as fuel or a fuel supplement.

Used as Fuel	Total Kilograms
Metal	<input type="text" value="0"/>
Recovered Propane	<input type="text" value="0"/>
Refurbished Containers	<input type="text" value="0"/>
Other	<input type="text" value="0"/>

List any materials included in the "Other" category (250 characters max.)

I did not send any material to be used as fuel.

Clear Form Previous **Save & Next**

HSPTesting
2021/22 Refillable Propane Containers Performance - Processor
Enter your data and click **Save & Next** to move to the next reporting screen.

Processed Material Disposal Data

✓ Land Disposed ✓ Incinerated ✓ Used as Fuel **Stockpiled**

Includes material stored, stockpiled or otherwise deposited on land.

Stockpiled	Total Kilograms
Metal	<input type="text" value="0"/>
Recovered Propane	<input type="text" value="0"/>
Refurbished Containers	<input type="text" value="0"/>
Other	<input type="text" value="0"/>

List any materials included in the "Other" category (250 characters max.)

I did not stockpile any material.

Clear Form Previous **Save & Next**

2. For each tab, if you did not send any material for land disposal, incineration, used as fuel or stockpiled, leave the kilograms field blank and click the check box for **I did not send any material**.
3. Click **Save & Next**.

Performance report

Enter your processed material disposal data cont.

1. Click on **Edit** if you need to change the previously entered data.
2. Click **Save & Next** to proceed.

Processed Material Disposal Data

Land Disposed Incinerated Used as Fuel Stockpiled

Includes material sent to landfills and dumps.

Land Disposed	Total Kilograms
Metal	1,000
Recovered Propane	1,000
Refurbished Containers	1,000
Other	0
Total	3,000

Land Disposed data last updated by: HSP Testing on May 05, 2023 12:10 p.m.

1

2021/22 Refillable Propane Containers Performance - Processor

Enter your data and click **Save & Next** to move to the next reporting screen.

Processed Material Disposal Data

Land Disposed Incinerated Used as Fuel Stockpiled

Includes material sent to landfills and dumps.

Land Disposed	Total Kilograms
Metal	<input type="text" value="1000"/>
Recovered Propane	<input type="text" value="1000"/>
Refurbished Containers	<input type="text" value="1000"/>
Other	<input type="text" value="0"/>

List any materials included in the "Other" category (250 characters max.)

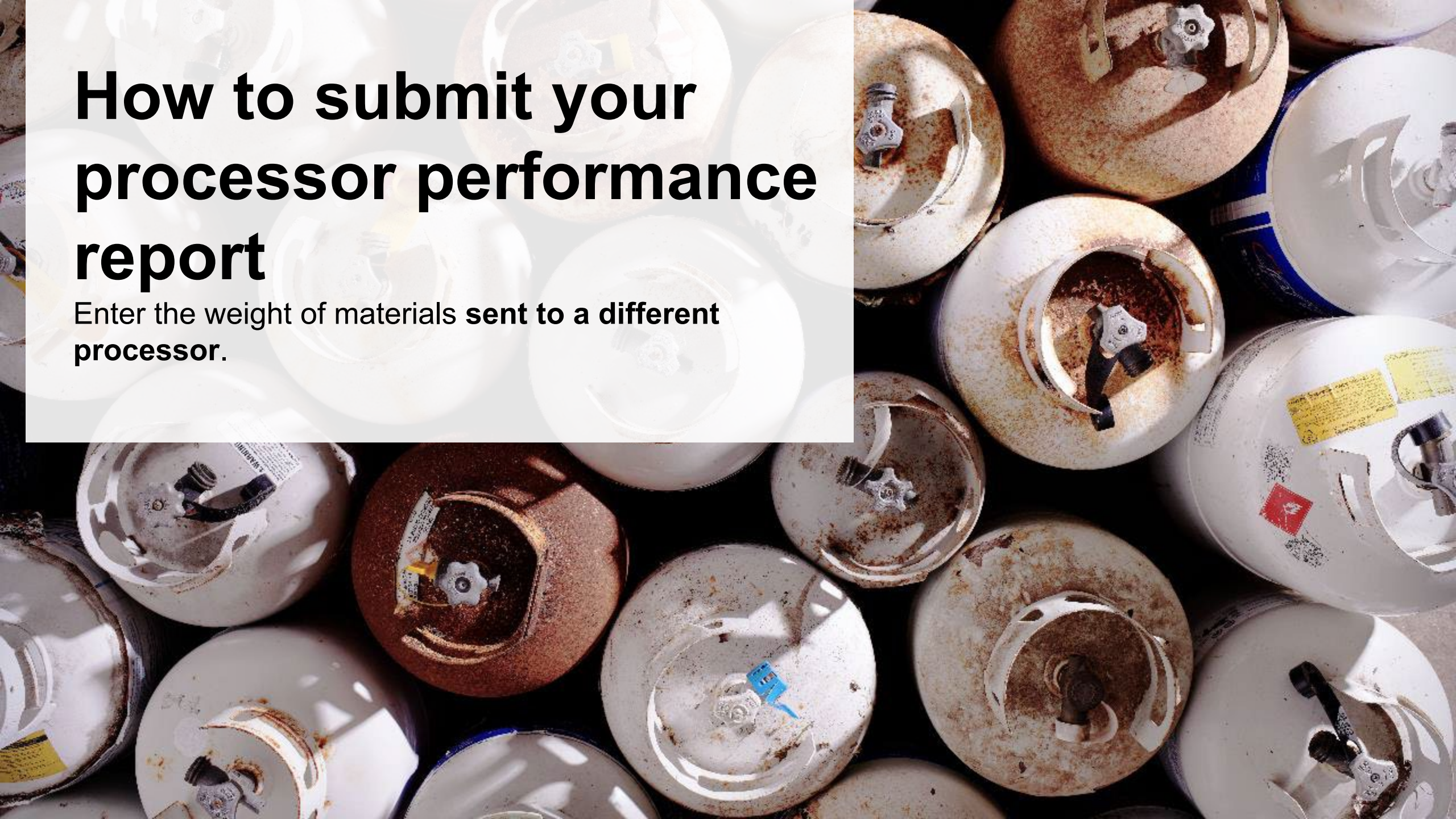
I did not send any material for land disposal.

2

Land Disposed data last updated by: Karim Asad on Jul 17, 2023 10:48 a.m.

How to submit your processor performance report

Enter the weight of materials sent to a different processor.



Performance report

Enter the weight of materials sent to a different processor

1. Click **Start** to begin entering the total weight of refillable propane containers sent to a different processor.

Sent to a Different Processor

Sent Downstream

Input the weight of refillable propane containers sent for processing by a different processor.

Sent Downstream	Total Kilograms
Refillable Propane Containers	
Total	

1 **Start**

Performance report

Enter the weight of materials sent to a different processor cont.

1. Enter the total weight of refillable propane containers sent for processing by a different processor under **Total Kilograms**.
2. Click **Save & Next**.
3. Click on **Edit** if you need to change the previously entered data.

HSPTesting
2021/22 Refillable Propane Containers Performance - Processor
Enter your data and click **Save & Next** to move to the next reporting screen.

Sent to a Different Processor

Sent Downstream

Input the weight of refillable propane containers sent for processing by a different processor.

Sent Downstream

Refillable Propane Containers

1

Total Kilograms

Clear Form **2** Save & Next

Sent to a Different Processor

✓ Sent Downstream

Input the weight of refillable propane containers sent for processing by a different processor.

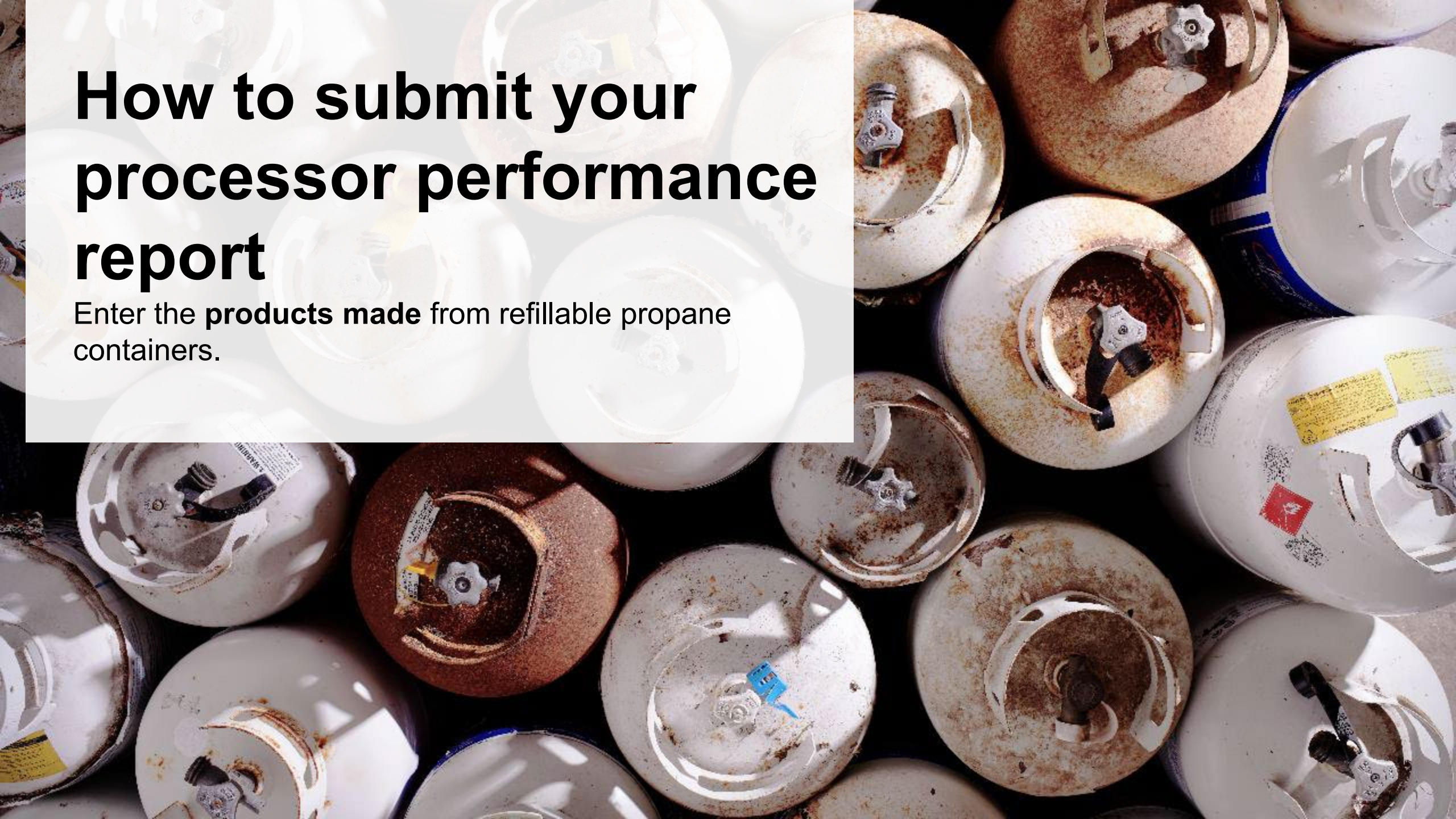
Sent Downstream	Total Kilograms
Refillable Propane Containers	1,000
Total	1,000

Sent Downstream data last updated by: HSP Testing on May 05, 2023 12:31 p.m.

3 Edit

How to submit your processor performance report

Enter the **products** made from refillable propane containers.



Performance report

Products made from refillable propane containers

1. Click **Start** to enter your data of products that you created out of processed refillable propane containers.
2. Under **My Products**, enter the name of the product you created from processed refillable propane containers.
 - Write “Not Applicable or “None” if you did not make products out of refillable propane containers.
3. Click **Save & Next**.

Products Made from Refillable Propane Containers

My Products Downstream Processor Products

Enter the products that you create out of processed refillable propane containers (max. 250 characters).

My Products

Refillable Propane Containers

1 **Start**

HSPTesting

2021/22 Refillable Propane Containers Performance - Processor

Enter your data and click **Save & Next** to move to the next reporting screen.

Products Made from Refillable Propane Containers

My Products Downstream Processor Products

Enter the products that you create out of processed refillable propane containers (max. 250 characters).

My Products

Refillable Propane Containers

2

Clear Form **3** **Save & Next**

Performance report

Products made from refillable propane containers cont.

1. Under **Downstream Processor Products**, enter the products made from refillable propane containers sent to a downstream processor.
 - Write “Not Applicable or “None” if you did not make products out of refillable propane containers.
2. Click **Save & Next**.
3. Click on **Edit** if you need to change the previously entered data.

HSPTesting
2021/22 Refillable Propane Containers Performance - Processor
Enter your data and click **Save & Next** to move to the next reporting screen.

Products Made from Refillable Propane Containers

✓ My Products **Downstream Processor Products**

Enter the products made from materials you sent to a downstream processor (max. 250 characters).

Downstream Processor Products

Refillable Propane Containers

Clear Form Previous **Save & Next**

Products Made from Refillable Propane Containers

✓ My Products ✓ Downstream Processor Products

Enter the products that you create out of processed refillable propane containers (max. 250 characters).

My Products

Refillable Propane Containers

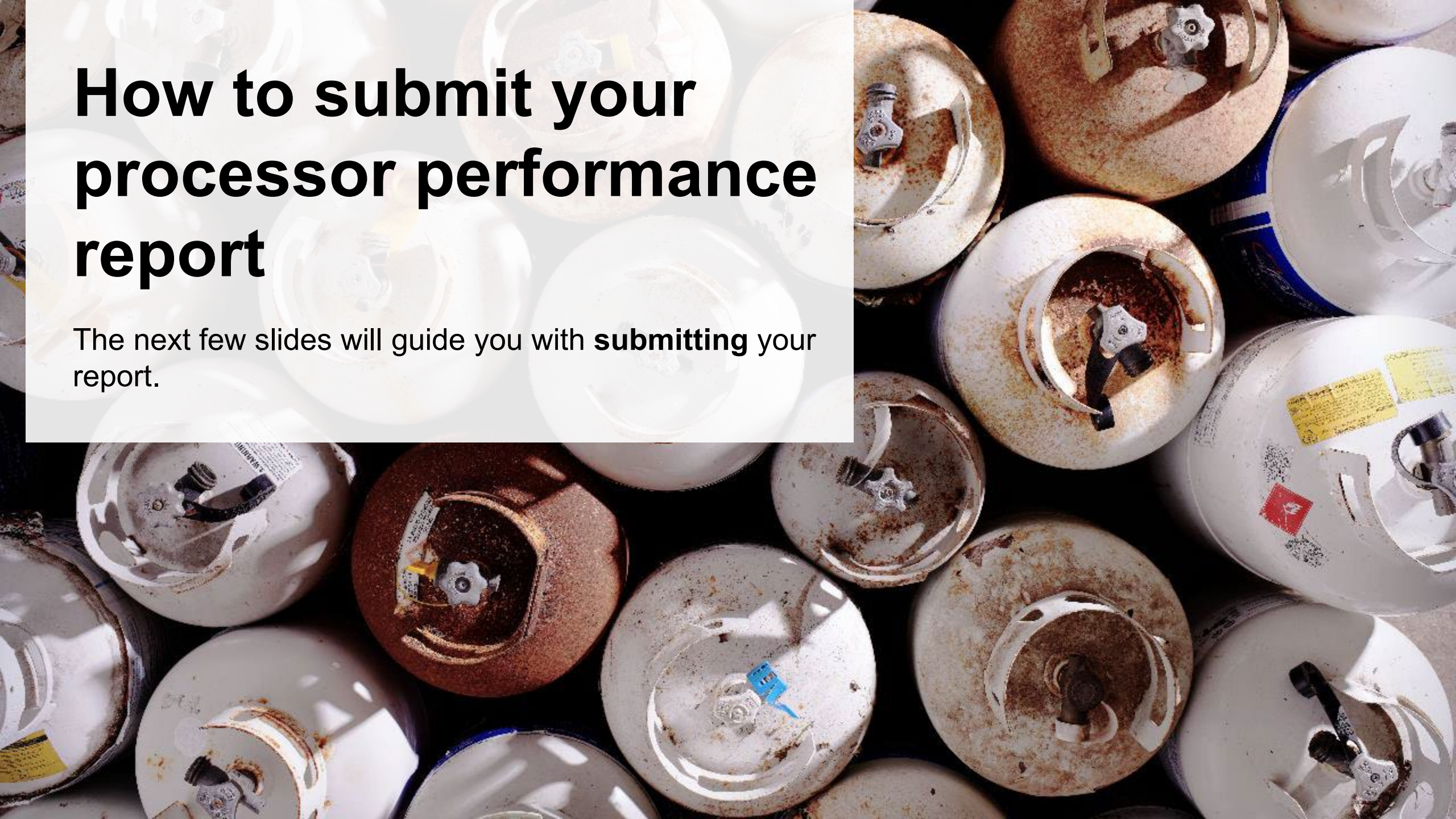
xxxxxx

My Products data last updated by: HSP Testing on May 05, 2023 12:46 p.m.

Edit

How to submit your processor performance report

The next few slides will guide you with **submitting** your report.



Performance report

Submit your report

1. Under **Report Summary**, you can review the data previously entered and click **Edit** if you need to make changes.
2. Click on **Submit Report** once you are finished reviewing and ready to submit.

TopNotchAuto
2021/22 Refillable Propane Containers Performance - Processor

Report Status
In Progress

Report Summary

Received from Haulers

✓ Inside Ontario ✓ Outside Ontario

Input the weight of refillable propane containers received from inside Ontario.

Inside Ontario	Total Kilograms
Refillable Propane Containers	0
Total	0

Inside Ontario data last updated by: Gary Agard on Jul 13, 2023 02:31 p.m.

Edit

Submit Report

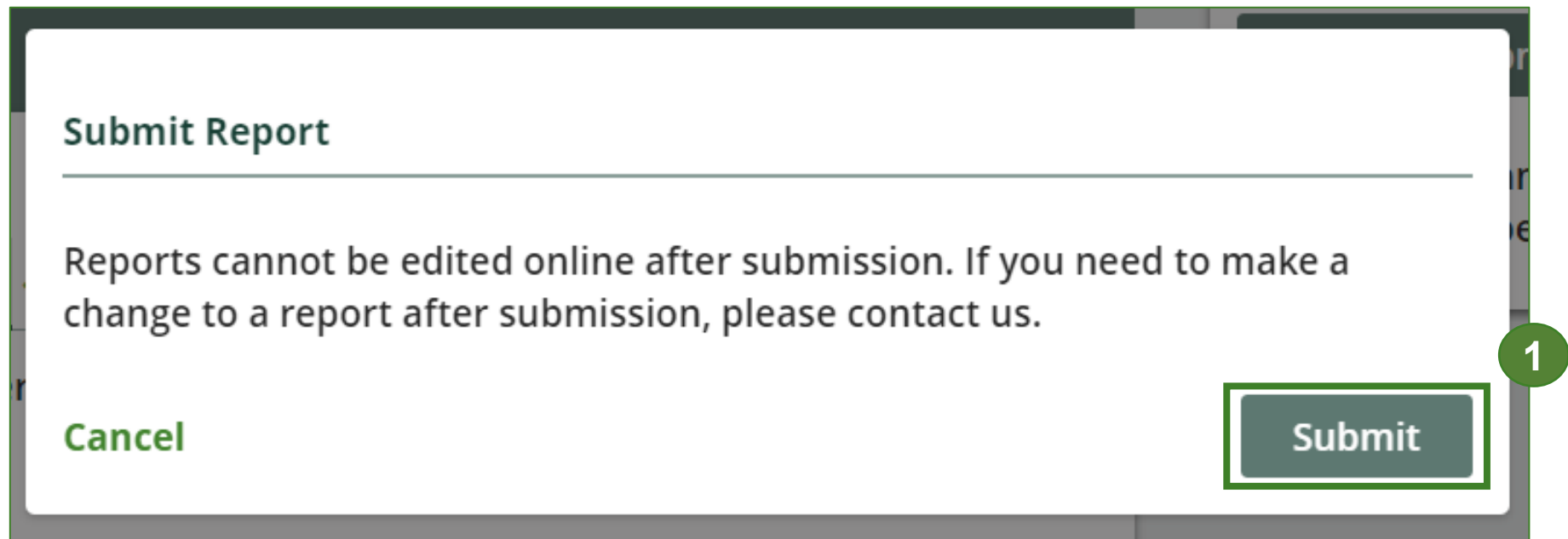
Make sure to provide all the required data before submitting.

Performance report

Submit your report cont.

1. After clicking on **Submit Report**, the below notice will appear. After reading the notice, click **Submit**.

Note: Once the report is submitted you are not able to make any changes.



Performance report

View submitted report

1. On the **Refillable Propane Containers** homepage, under the **Processor** tab, your Refillable Propane Containers Performance – Processor report status should show **Submitted** and who it was last updated by.
2. Under **Action**, you can click **View** to review the report submission or click **Download** for a copy of the report.

The screenshot shows the 'Refillable Propane Containers Processor' tab in a web application. At the top, there is a navigation bar with 'Producer *', 'Hauler *', 'Processor' (selected), 'Invoices', and 'Add Roles'. A notification banner states: 'An asterisk (*) indicates that you have incomplete items to address in the tab.' Below the navigation, a table lists reports. The first row is '2021/22 Refillable Propane Containers Pe.' with a status of 'Submitted' (dated May 05, 2023 01:00 p.m.) and 'Last Updated By' as 'HSP Testing'. The 'Action' column contains 'View' and 'Download' buttons. A green box highlights the 'Submitted' status and date, and another green box highlights the 'View' and 'Download' buttons. A green circle with the number '1' is next to the 'Status' column header, and a green circle with the number '2' is next to the 'View' and 'Download' buttons. Below the table, there are sections for 'Processing Sites' and 'Materials Processed from Refillable Propane Containers', each with a 'Manage' button.

HSPTesting
Refillable Propane Containers Homepage
Registration #:00025441
Refillable Propane Containers
Switch Programs

An asterisk (*) indicates that you have incomplete items to address in the tab.

Producer * Hauler * **Processor** Invoices Add Roles

Refillable Propane Containers

Report	Status	Last Updated By	Action
2021/22 Refillable Propane Containers Pe.	Submitted May 05, 2023 01:00 p.m.	HSP Testing	View Download

Processing Sites Manage
List the address of each site where refillable propane containers are processed.

Materials Processed from Refillable Propane Containers Manage
Identify the materials that you recover or process.

Additional Resources



Have a question?

Resources to help you submit your report:

- Visit our [HSP processor webpage](#) for additional information on reporting requirements.
- For support with navigating the Registry and meeting your regulatory requirements, visit our [HSP Registry Resources webpage](#) to access registry procedures, compliance bulletins, how-to videos, FAQs and more.
- If you have further questions that are not answered in this guide, please contact the Compliance Team at registry@rpra.ca or call 1-833-600-0530.